

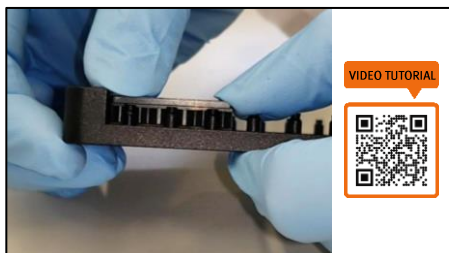
# Tips & Best Practices

PLAYLIST



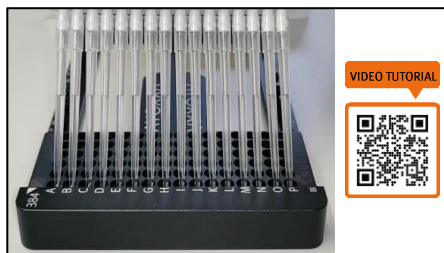
Follow the assay procedure as described in the *LUNARIS™ Kit Handbook* and refer to the *LUNARIS™ Tips & Best Practices* section to get the best out of your assay. Scan the QR Code for a video tutorial on each relevant step OR access the playlist on [AYOXXA's YouTube channel](#).

## 1. Inserting the BioChip



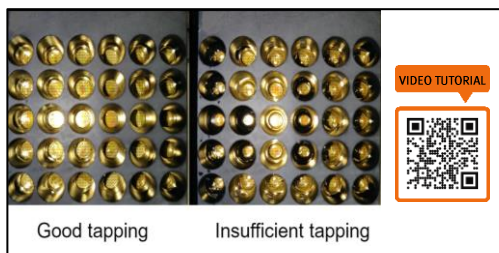
Firmly press down on the ends of the BioChip. A distinct “click” sound confirms the BioChip is tightly locked into the BaseFrame.

## 2. Washing the Wells of the BioChip



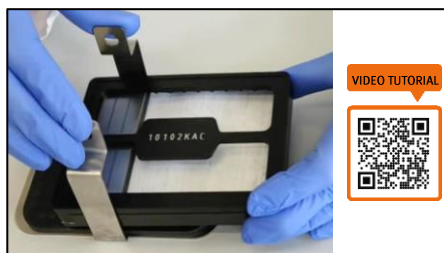
For all washing steps place the pipet tips at the top corner of the wells of the BioChip to dispense the wash buffer.

## 3. Discarding Liquids by Tapping



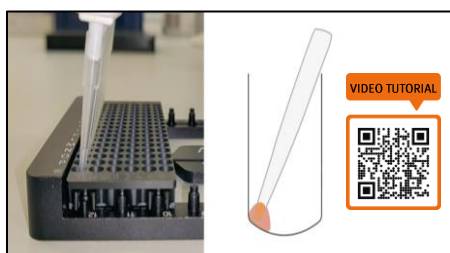
Flick the plate over a sink or container and repeatedly tap it on paper towels until the wells look dry.

## 4. Reverse Centrifugation



Place a sheet of absorbent paper between the LUNARIS™ BioChip and lid. Put the Base-Frame upside down in a plate centrifuge.

## 5. Pipetting of Small Volumes



For pipetting of small volumes place the pipet tips at the bottom corner of the wells. Gently touch the BioChip surface.

## LUNARIS™ Kit Finder

Find the perfect match for your biomarkers of interest on the AYOXXA website - search by:

- Research area
- Species
- Biomarker type



KIT FINDER



<https://www.ayoxxa.com/finder>

### HEADQUARTERS GERMANY

AYOXXA Biosystems GmbH | BioCampus Cologne |  
Nattermannallee 1 | 50829 Köln | Germany |  
Phone: +49 (0) 221 222 529-55 |  
E-Mail: [support@ayoxxa.com](mailto:support@ayoxxa.com)  
[www.ayoxxa.com](http://www.ayoxxa.com)

### USA

AYOXXA Biosystems Inc. c/o Platinum CFO |  
2600 Tower Oaks Blvd. | Suite 220 | Rockville | MD 20852 | USA |  
Phone: +49 (0) 221 222 529-55 |  
E-Mail: [support@ayoxxa.com](mailto:support@ayoxxa.com)  
[www.ayoxxa.com](http://www.ayoxxa.com)